

MRTE Digital room thermostat

Assembly instructions

LOCATION



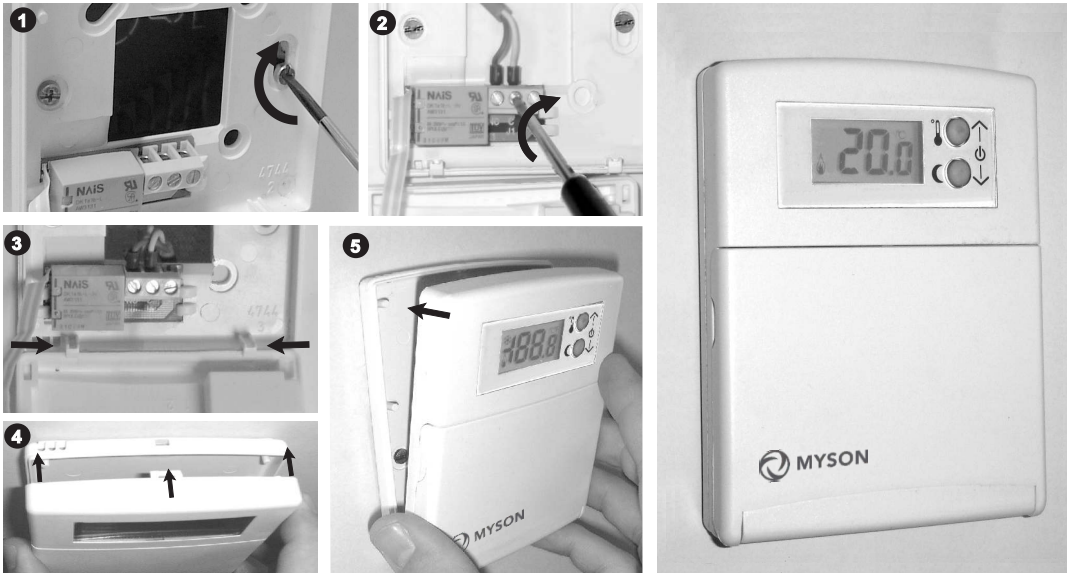
REPLACE BATTERY



When displays shows bAt message:
 - Take out batteries and wait by 10 seconds.
 - Put on the new batteries in accordance with above pictures.



INSTALLATION



Conditions of Guarantee

This equipment has a 2 years guarantee, which means it only replaces the faulty part.

We do not take any responsibility for deteriorated equipment, which are a result of bad handling.

The guarantee does not include:

- Equipment with deteriorated, worn or modified serial number.
- Equipment whose connection or use has not been carried out in accordance with the indications attached to equipment.
- Equipment modified without prior agreement from manufacturer.
- Equipment whose deterioration is due to bangs or emanations of liquids or gases.

Electronic thermostat

VERY IMPORTANT!

It is installer's responsibility to fit electrical protection suitable for the installation (STANDARDIZED).

This appliance should be mounted on a universal recessed box.

In accordance with our policy of continual product improvement, we reserve the right to amend the specification of these products without prior notification.

Independently mounted control device for surface mounting and connection to fixed wiring.

Device designed for use in non-polluted environments.



MYSON CONTROLS
 MYSON LTD, EASTERN AVENUE,
 TEAM VALLEY, GATESHEAD,
 TYNE & WEAR, NE11 0PG
 SALES OFFICE No.: 0845 402 3434

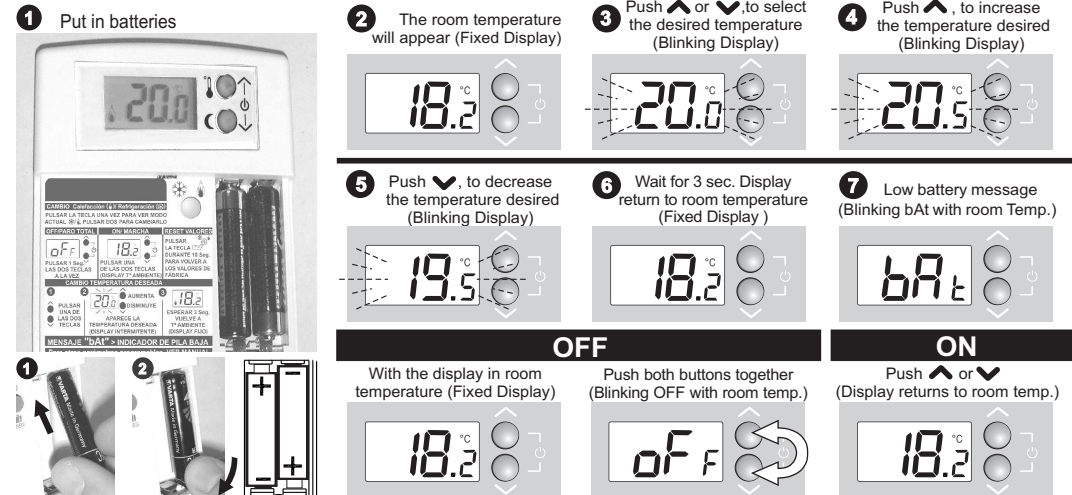


Cód.: 5989 JUL09

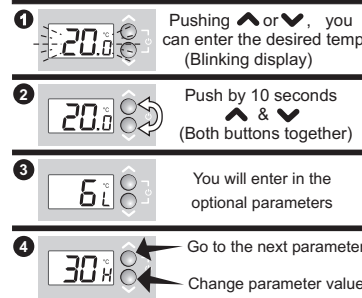
MRTE Digital room thermostat

Instructions for BASIC USE (Change temperature desired)

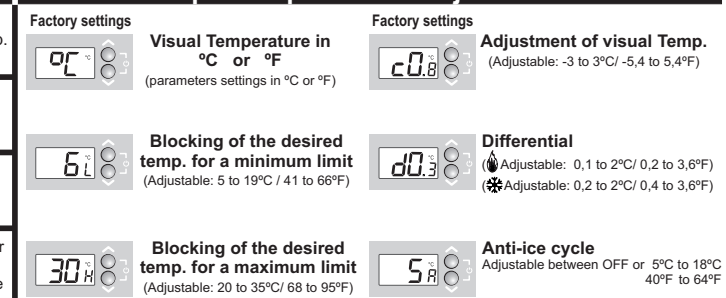
REGULATION MODE IN HEATING BY DEFAULT



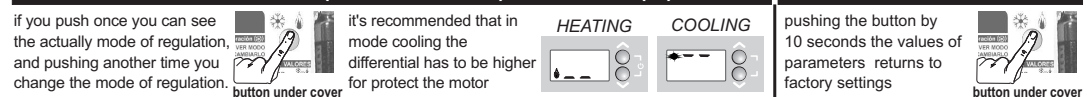
ACCESS TO PARAMETERS



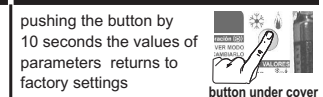
Optional parameter adjustments



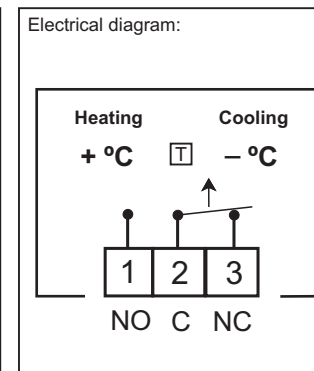
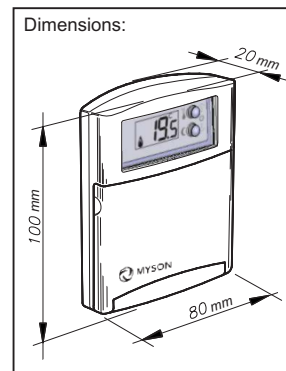
CHANGE MODE HEATING (BY DEFAULT) / COOLING



VALUE RESET



Technical Information



Regulation scale :from 5 to 35°C.
 Max. Room temperature :Tmin. 0°C, Tmax 40°C.
 Storage temperature :maximum 50°C.
 Temperature during pressure ball test:
 - Zones with user acces.....75°C.
 - Zones with voltage.....125°C.
 2 Alkaline batteries :LR03 (AAA).
 Low battery indicator : "bAt".
 Battery duration :2 years aprox.
 Breakage power (Contacts) :8(3)A 250V~.
 Connected wire section :1,5mm2.
 Wiring type :H-05V-K.
 Ingress Protection :IP20.
 Contamination degree :2.
 Software type A :Action type 1B.
 Impulse voltage :2500 V.
 Standard :EC.